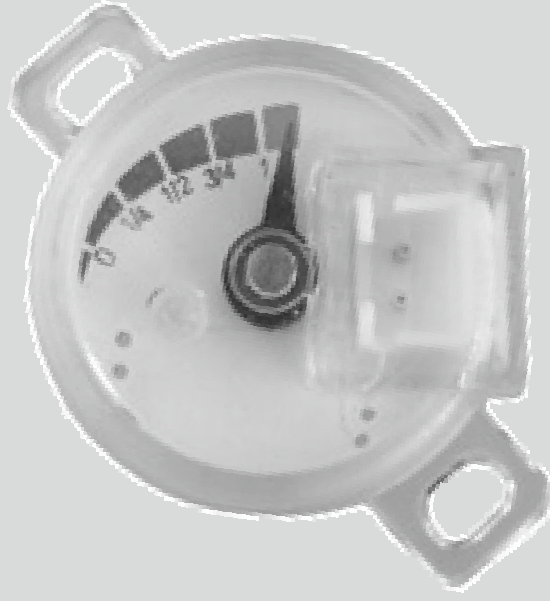




**ELEKTRONİK**

**ALTERNATİF YAKIT SİSTEMLERİ SAN TİC LTD ŞTİ**



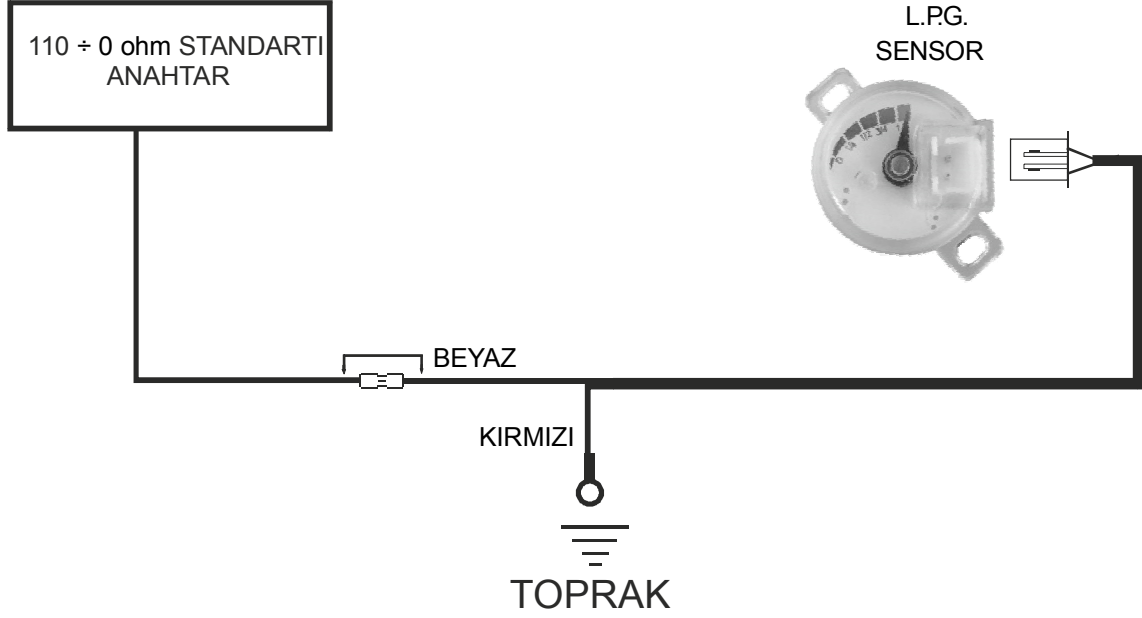
**KE 043**

**SENSÖR ( 110 ohm - 0 ohm )**

**SENSOR ( 110 ohm - 0 ohm )**

**SENSÖR**  
Kod: KE 043

**Montaj Talimatları**



**Türkçe**

## Teknik Özellikler

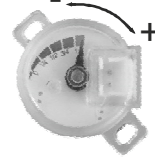
### Sensör 110 ohm - 0 ohm

Gaz deposu üzerinde bulunan şamandıradaki mekanik seviye bilgisini, kumandadan gelen 12 volt'u üzerinde bulunan dirençler ile bölerek kumandanın algılayabileceği seviyelere indirir.

- 1) Sensörü multivalf üzerine yerleştirin ve ilgili vidalarla takın.
- 2) Anahtar/gösterge montaj diyagramında gösterildiği şekilde konnektörü sensöre yerleştirin.

Yedek olarak sürülebilecek kilometre sayısında ufak bir değişiklik yapmak mümkündür:

Sensörü multivalf içerisinde saatin ters yönünde çevirdiğinizde yedek olarak sürmeniz gereken kilometre azalırken saat yönünde çevirdiğinizde artar.

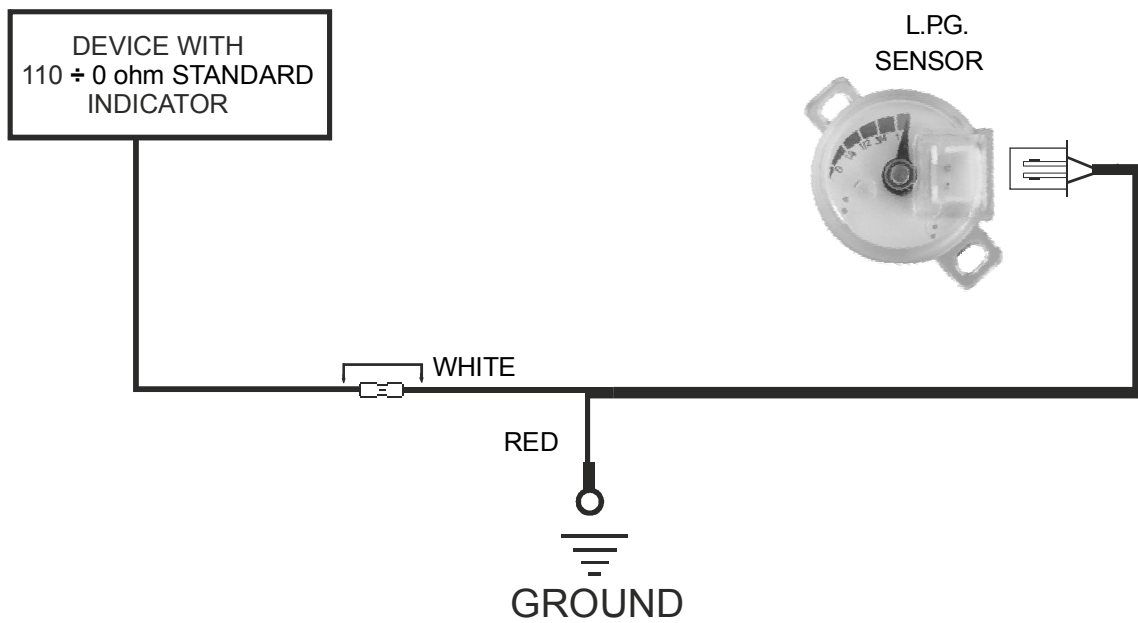


**Türkçe**

# SENSOR

Code: KE 043

## Installation diagram



English

## General Direction

### Sensor 110 ohm - 0 ohm standard

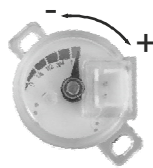
To divide the mechanical level data in the float located on the gas tank into resistances over 12 volt

coming from the control and to reduce to the levels that can be perceived by the Control.

1) Place the sensor on the multivalve and fix it with the relevant screws.

2) Insert the connector into the sensor and wire as indicated in the assembly diagram of the switch/indicator.

It is possible to carry out a small change of the kilometre number that can be driven as reserve; by rotating the sensor in the seat of the multivalve in counterclockwise direction, the kilometres that you must drive as reserve are reduced, while rotating it in clockwise direction, they increase.



**English**